



AM 5225

kW 0.90 Hm 10.0 max
Hp 1.20 L/1' 618 max

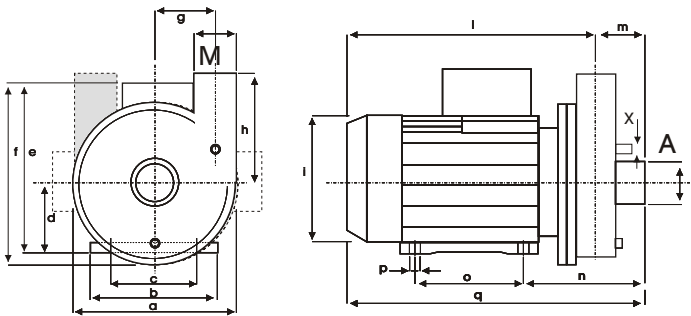




Corpo Pompa
Pump Body
Pumpengehäuse **PP 30 GF**

Girante Aperta
Open Impeller
Offenes Laufrad **SPS G30**

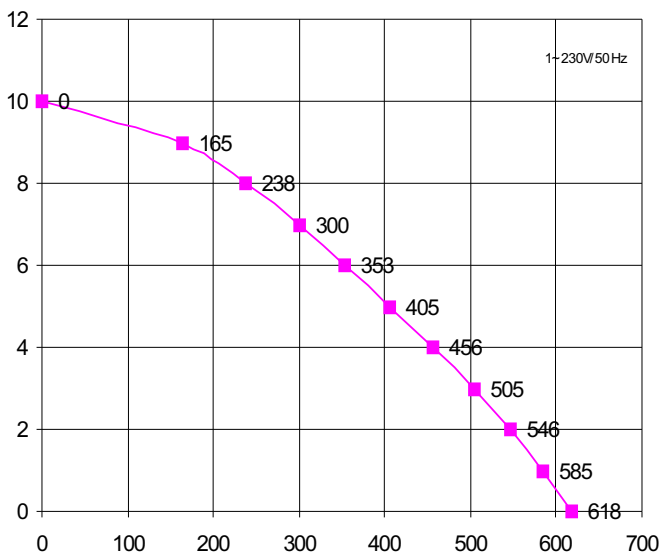
Albero Motore
Motor Shaft
Motorwelle **AISI 416**

Tenuta Meccanica
Mechanical Seal
Gleitringdichtung **GRAFITE/CERAMICA**
CARBON/CERAMIC
KOHLE/KERAMIK



SX	A	M	DX	A	M
 L9: L10: L11: L12:	50	50	 F4:	60	50
	60	50		70	60
	63	63		2"	1½"
	70	60			

mod	a	b	c	d	e	f	g	h	i	l	m	n	o	p	q	x	kg
AM5225	212	135	110	71	182	213	75	112	142	248	54	134	90	8	302	12	6,8



H m	0	1	3	5	6	7	8	9	10
L / 1'	618	585	505	405	353	300	238	165	0

Ci riserviamo il diritto di apportare modifiche tecniche
We reserve the right of technical modifications
Technische Änderungen vorbehalten

Potenza motore Hp **1,21** kW **0,9**
Motor power
Motor Leistung

Tensione/Frequenza 1~V/Hz 3~V/Hz
Tension/Frequency 230/50 230-400/50
Spannung/Frequenz

Corrente assorbita A **4,9** A **3,5 - 2,1**
Power consumption
Stromaufnahme

GPM
RPM **2800**
UPM

Condensatore 20 µF ----
Capacitor
Kondensator

Protezione termica 155 °C
Thermal Overload
Überlastschutz

Classe isolamento F
Insulation class
Isolationsklasse

Grado protezione IP 44
Protection class
Schutzklasse

Servizio S1 CONTINUO
Duty CONTINUOUS
Betriebsart DAUERBETRIEB